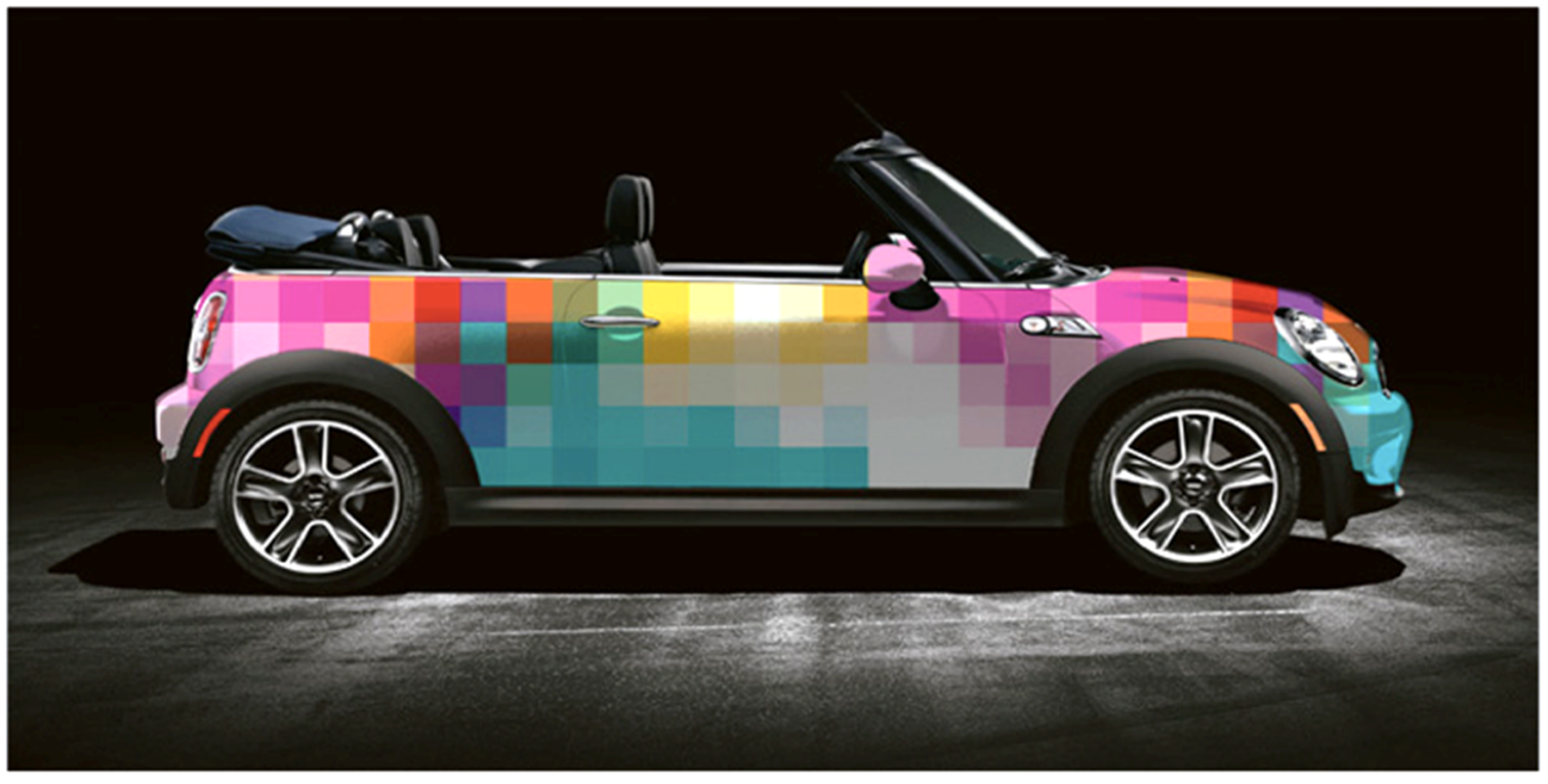




---

MILOU KET STYLING & DESIGN

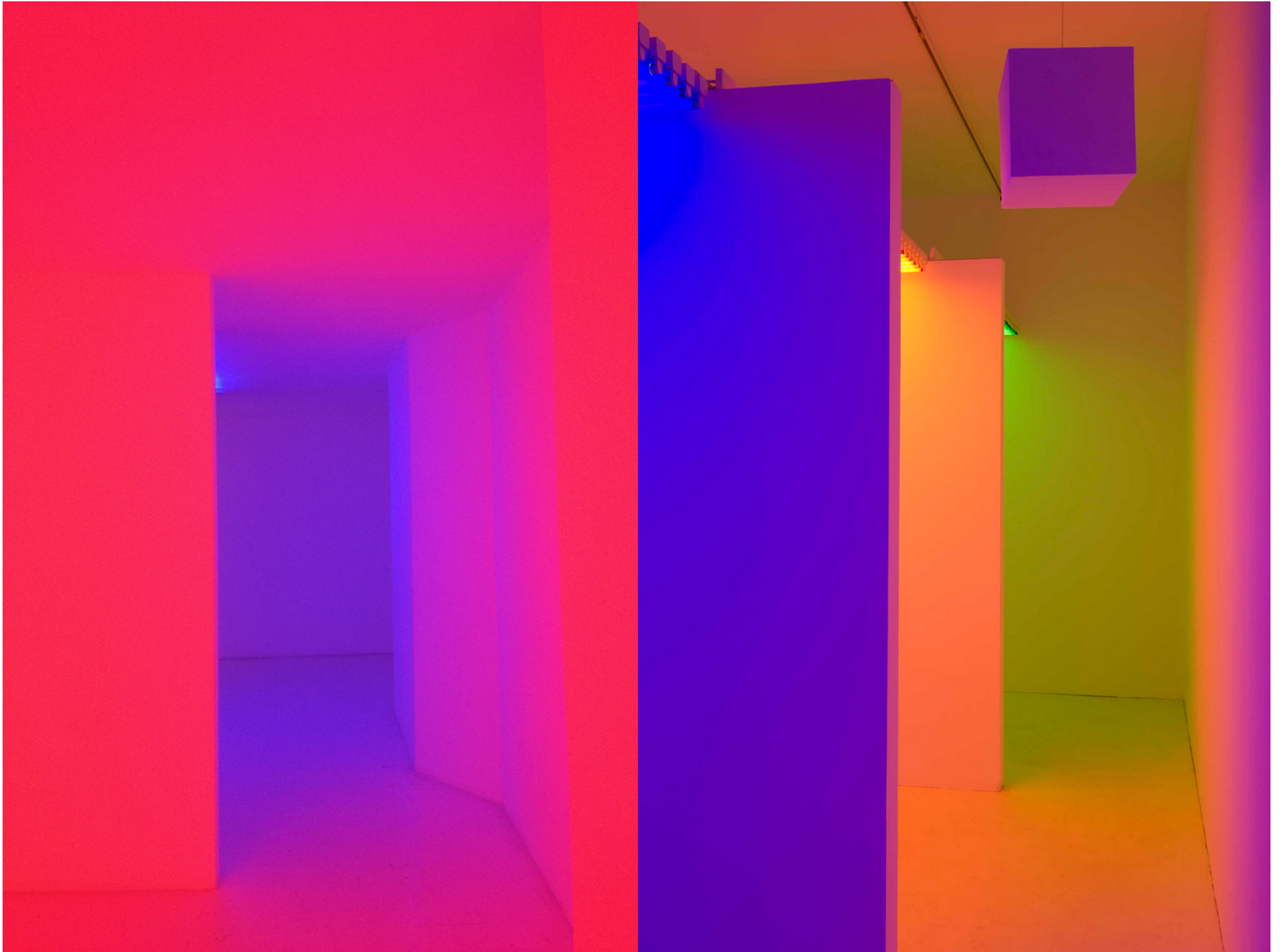












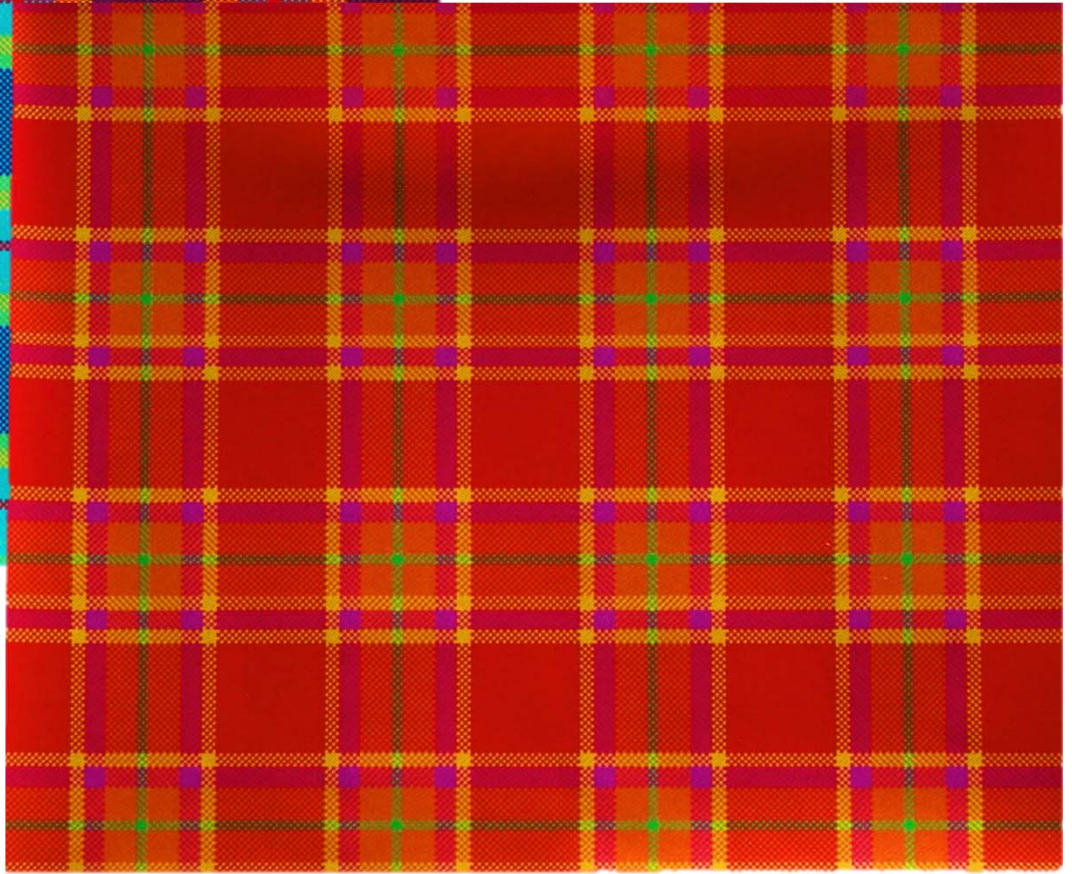
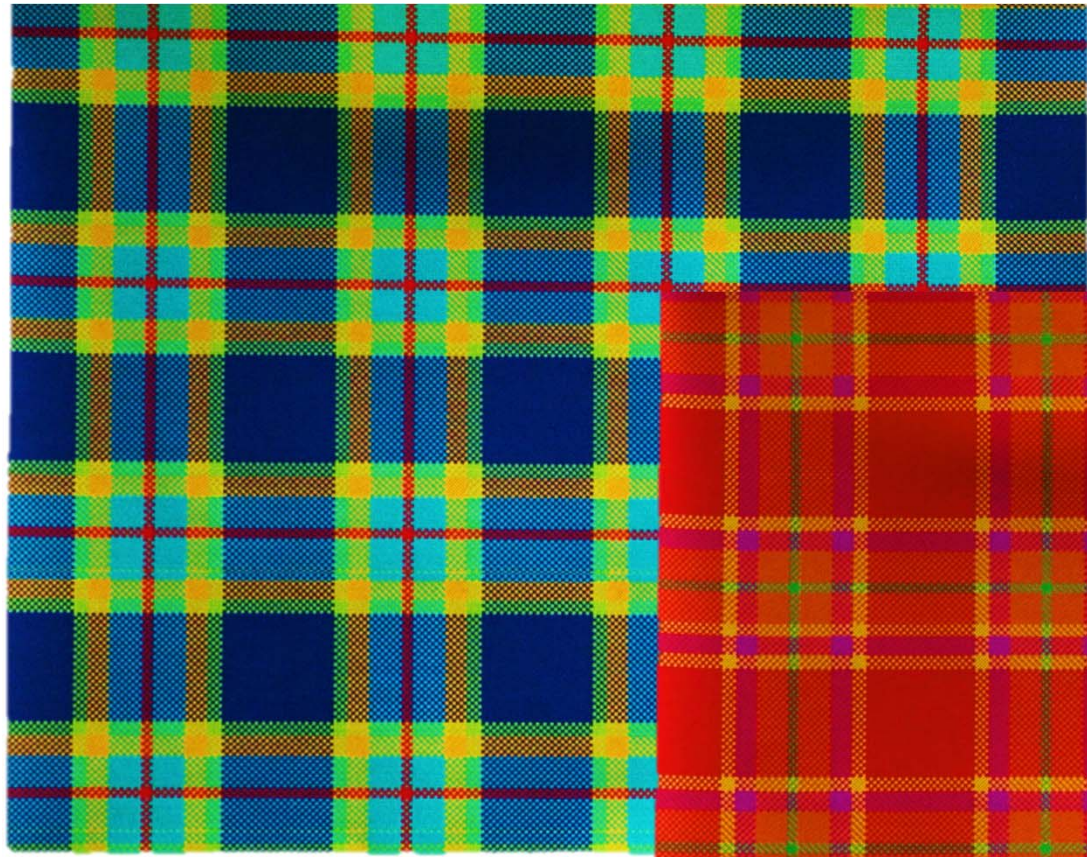




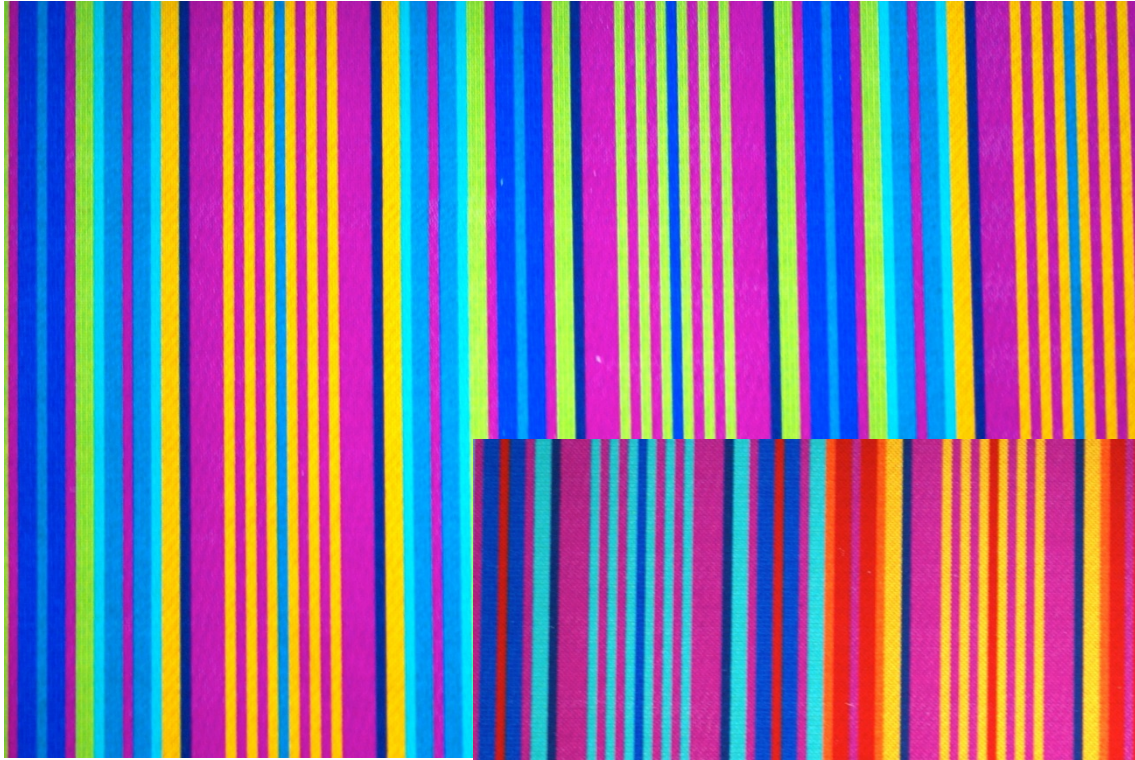








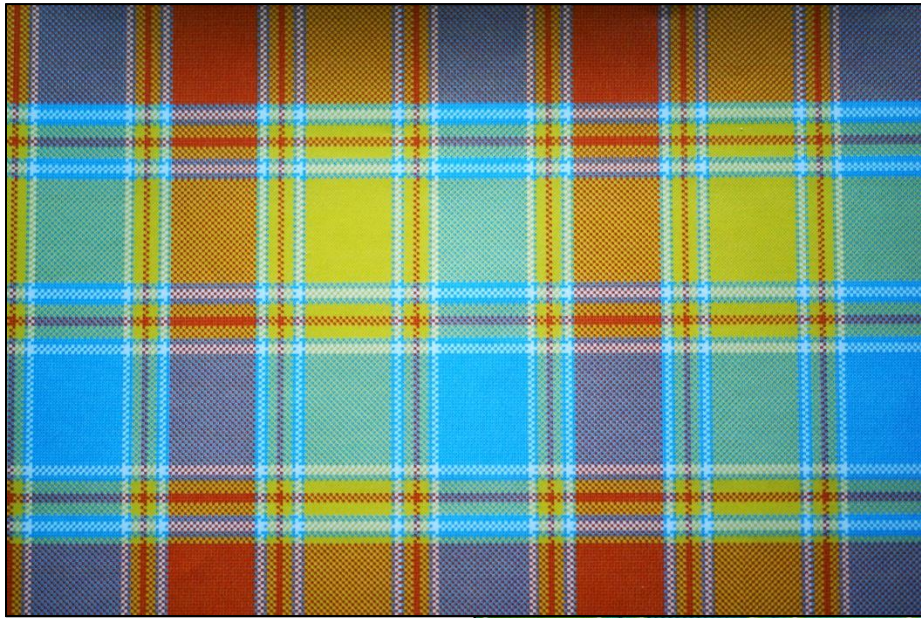


























# Werkwijze:

- Verzamelen en verwerken van informatie
- Lidmaatschappen en abonnementen
- Beurs bezoek
- Oriëntatie en Reizen
- Vakliteratuur
- Consumentenbladen









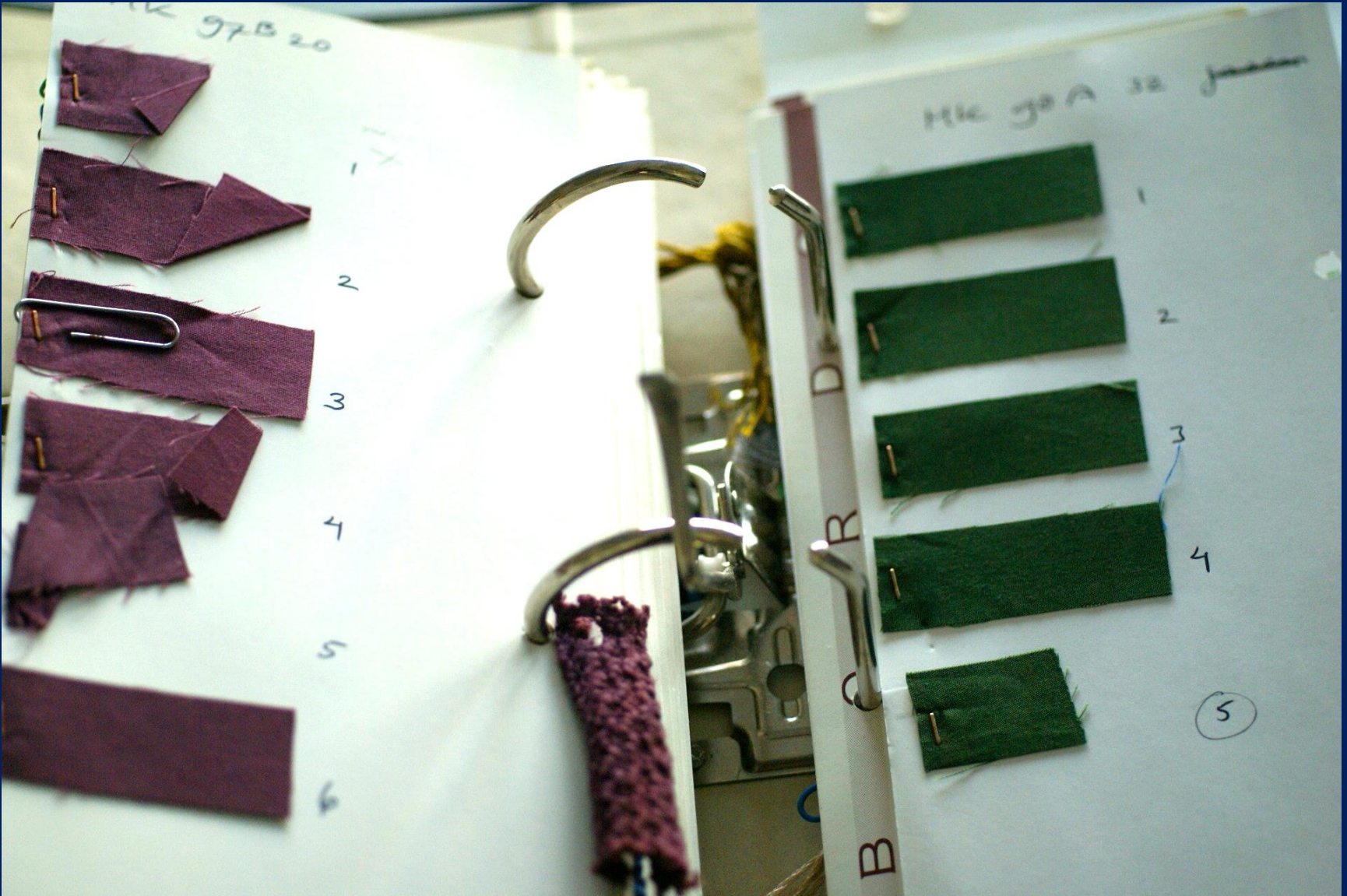




DYE  
S/S  
2007

Dolly Rotti  
S/S  
2007



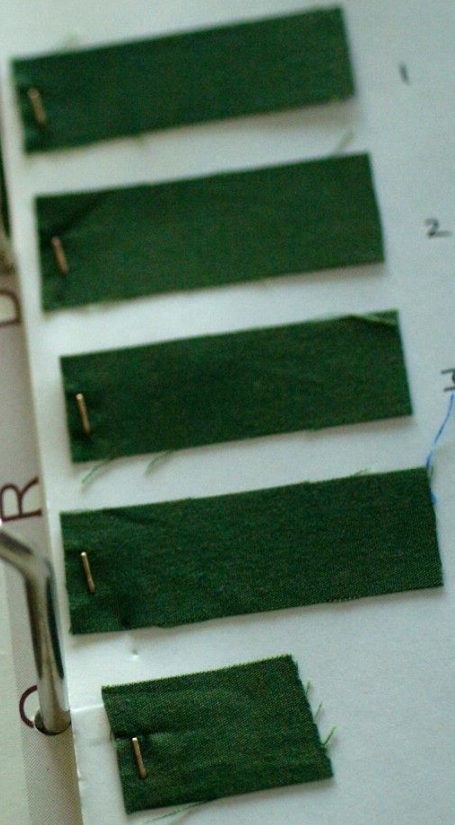


Hic 97B 20



1  
2  
3  
4  
5  
6

Hic 98A 32



1  
2  
3  
4  
5

B  
C  
R  
D



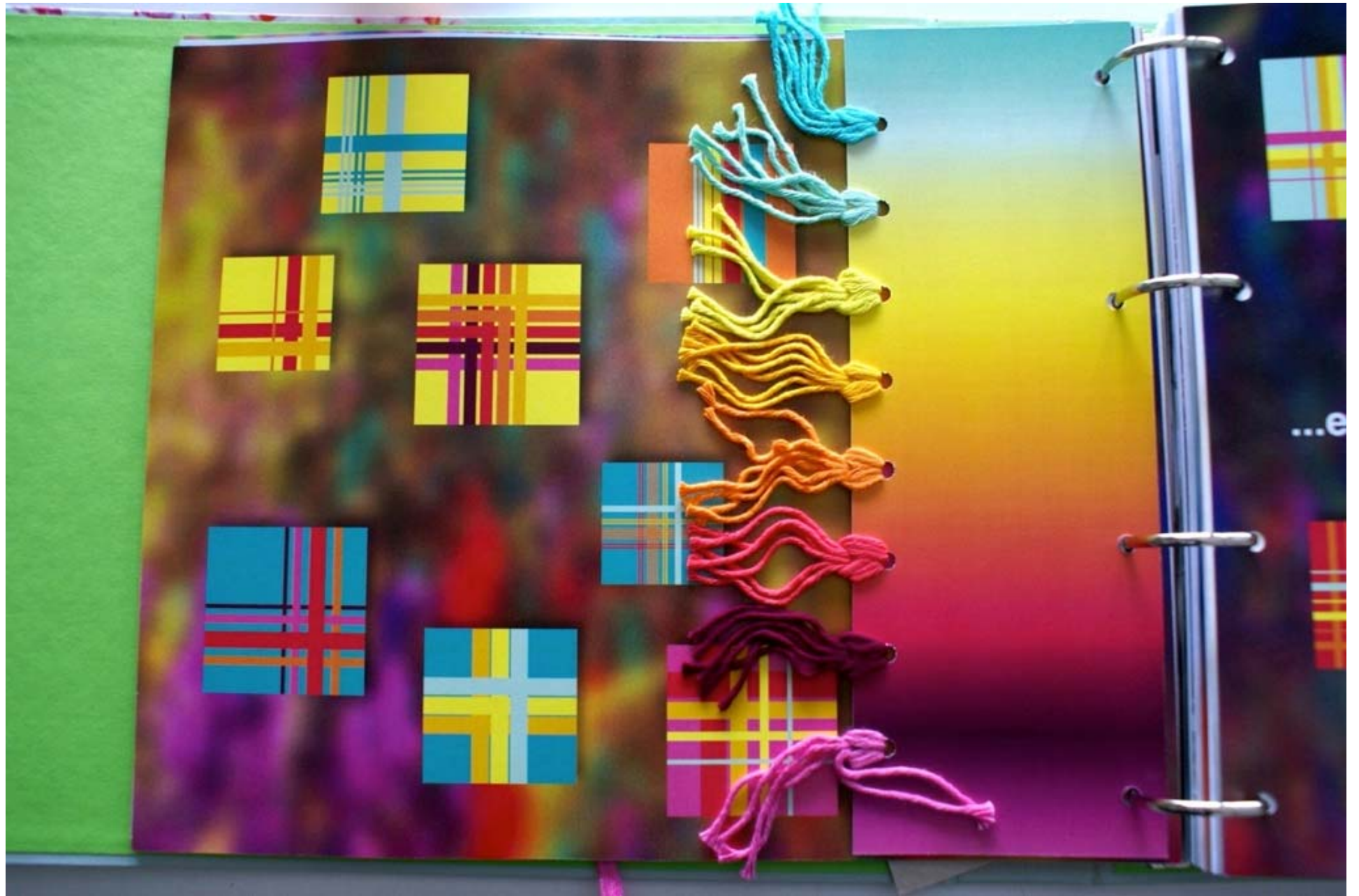
COLOUR COMBINATIONS  
Combined with one another  
evokes a strong perceptual effect.

COLOUR COMBINATIONS TECHNICOLORS  
Now these bright colours are mixed with colours from  
other ranges to obtain either a tone in tone or a contrast  
effect.

COLOUR COMBINATIONS TECHNICOLORS  
For a sporty look black is added to enliven these bright  
colours even more.

























Vibrant  
fe  
monochrome  
patterns  
textures  
bold colors  
the elements  
very water proof  
orthodox  
sheeted metal  
amorphous  
graphics  
3-D form  
new, high

neutrals  
sustainable  
metal black  
rich paddles  
e, thick  
double face  
light weight  
bold contrast  
the volume  
metallic yarn  
amels pack  
as morphing  
wall cladding  
stilly morph  
a rock eye  
re-use upcycle

rough luxury metal yarn bark-like effect  
in the sustainable materials, basket  
weave

Classy, ochre, gold metal yarn.  
laser cut sparkling classics  
innovative Tom Dixon gold, copper  
wall covering, luxurious. high-end  
restaurant

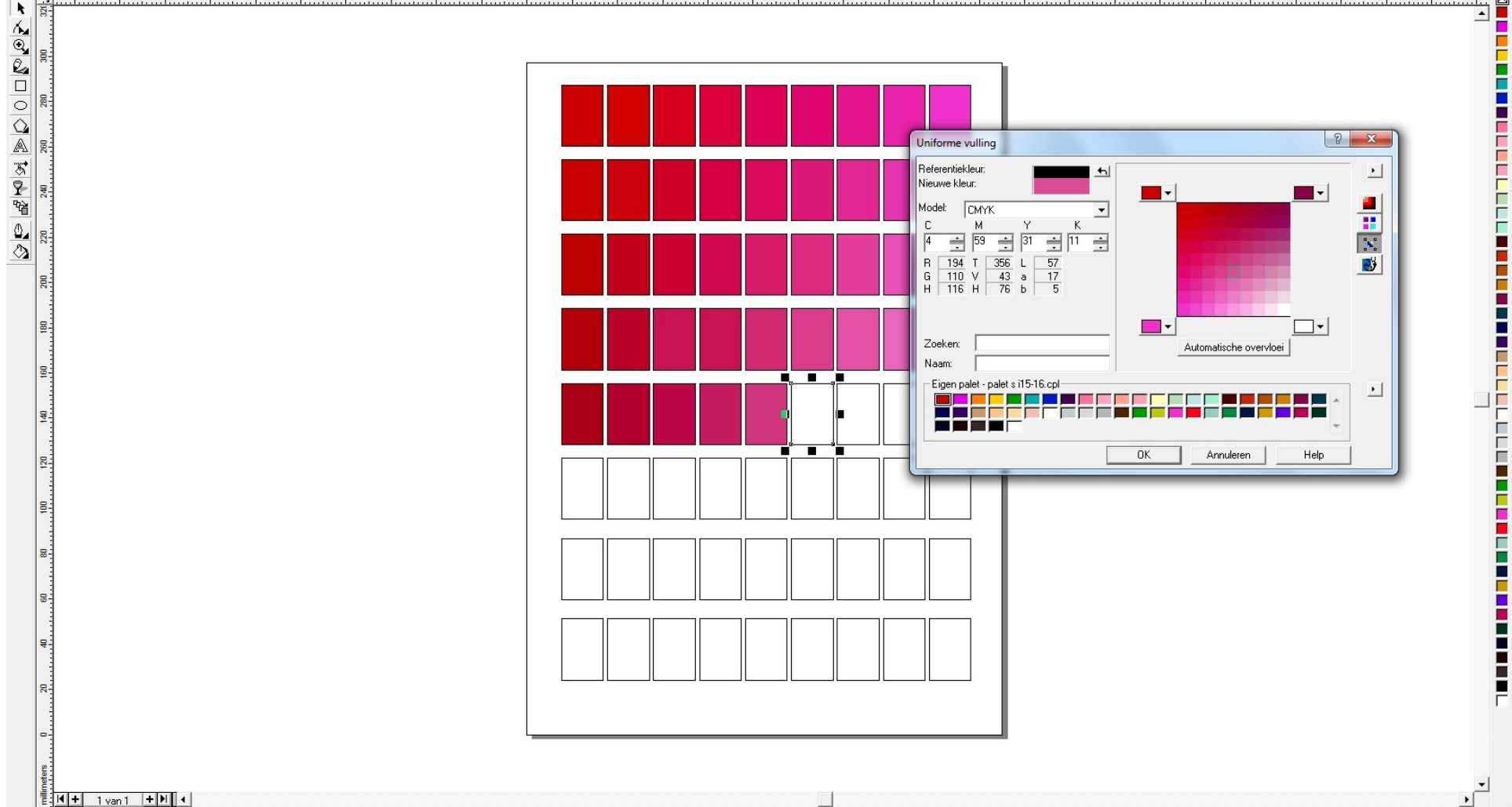
Gentlemen club imitation, snake  
pythons, eroded copper, rich bedding,  
compatible effect, masculine effect  
blue black. Splendours from the past,  
dark atmosphere, marble stone, elegant  
chique grey's, black, anthracite  
table wear Fendi, Autobahn  
luxury, feeling clean furniture is  
by hotel suite of Autbahn

Bedlinens, luxurious velvet, trimmings  
leathers (animal kingdom) patchwork  
Classic, Poetry club, gentle pastel  
re-embroidered graphics renewal, ornate  
lace, wintertale lace, embroidery,  
sheers, vintage romance  
copper, handmade rug, leather emboss  
jacquard, lace concrete, ladylike  
romantic, lace Nomad Hotel NY  
Venetian, pastel + past accent colours  
home decoration art nouveau  
butterflies, birds, black + white, yellow  
as accent, tablewear, key colour

Ethnic, the sampling of cultures  
dialogue of culture traditions







**Uniforme vulling**

Referentiekleur: [Black swatch]  
Nieuwe kleur: [Magenta swatch]

Model: CMYK

C	M	Y	K
4	59	31	11

R	194	T	356	L	57
G	110	V	43	a	17
H	116	H	76	b	5

Zoeken:   
Naam:

Eigen palet - palet s 115-16.cpl

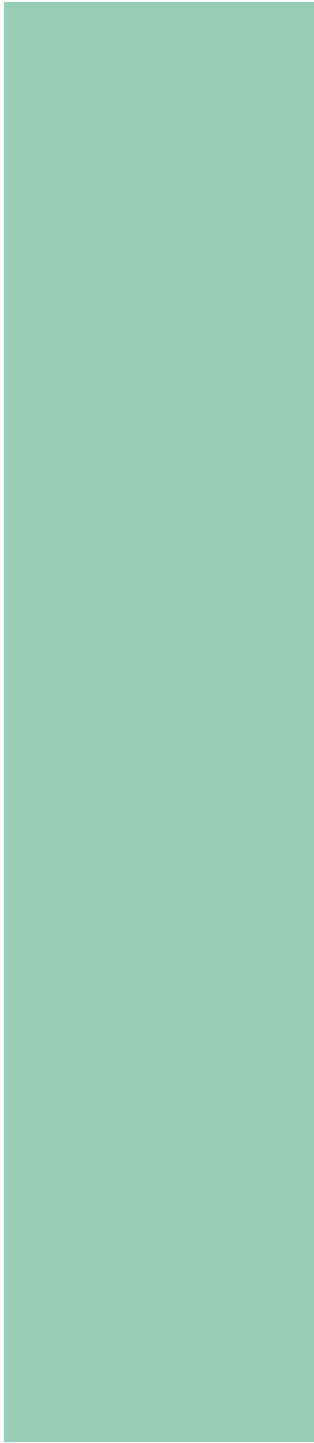
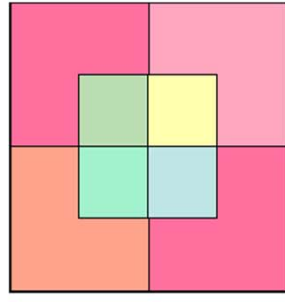
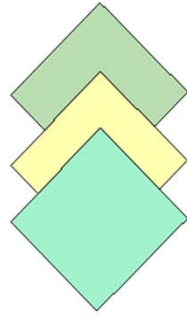
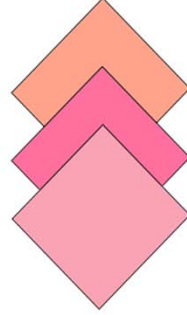
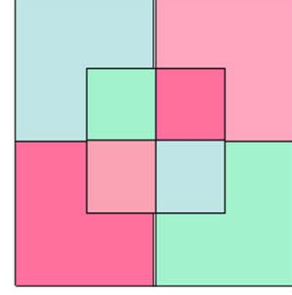
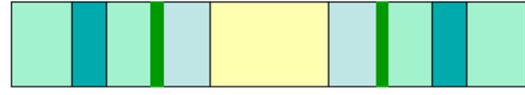
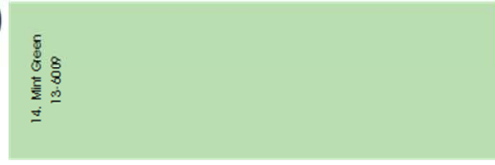
OK Annuleren Help







# N Candy Barock





KET  
MILOU KET Design & Design  
HOME COLOURS  
A/W 2013/2014





SWAROVSKI





# Innovation Lab

K E T





MILOU KET  
INNOVATIONLAB  
EDITION 2



INNOVATION LAB EDITION # 2



BUBBLE GUM



TRANSLUCENCY



REFLECTIONS



BIO MORPHIC



GLITTER & GLAMOUR





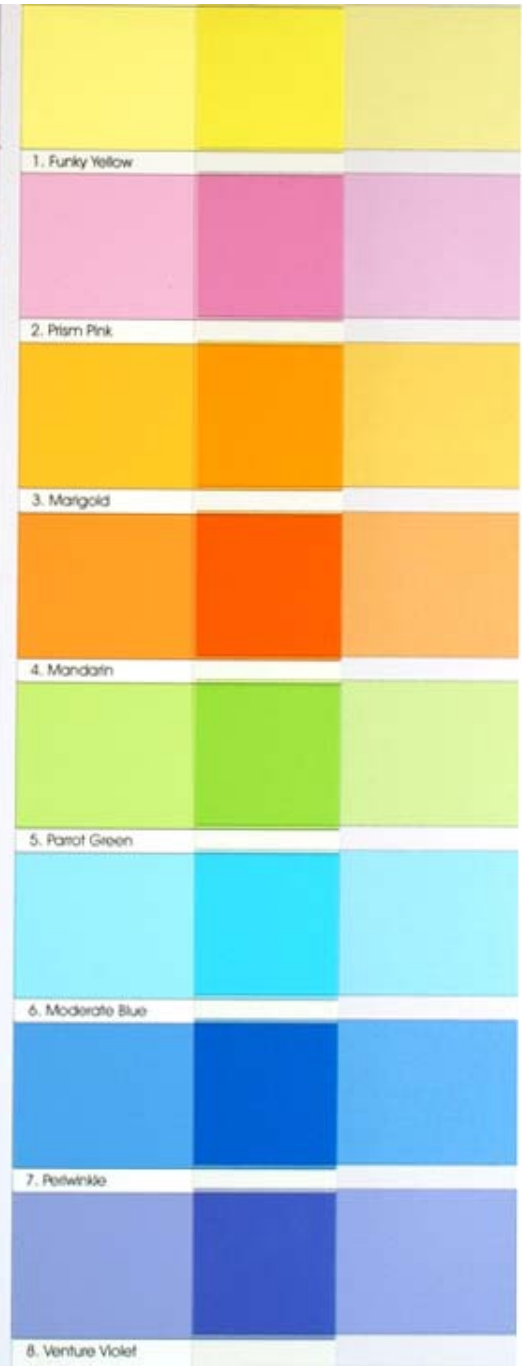


## **BUBBLE GUM**

innovation edition #2



BUBBLE GUM | 1.1







FLUORESCENCE | 1.8





## TRANSLUCENCY

innovation edition #2





**DISTORTION | 2.1**



SIGNAL RED 2.5







GREEN DESIGN | 1.6



## REFLECTIONS

i n n o v a t i o n e d i t i o n # 2















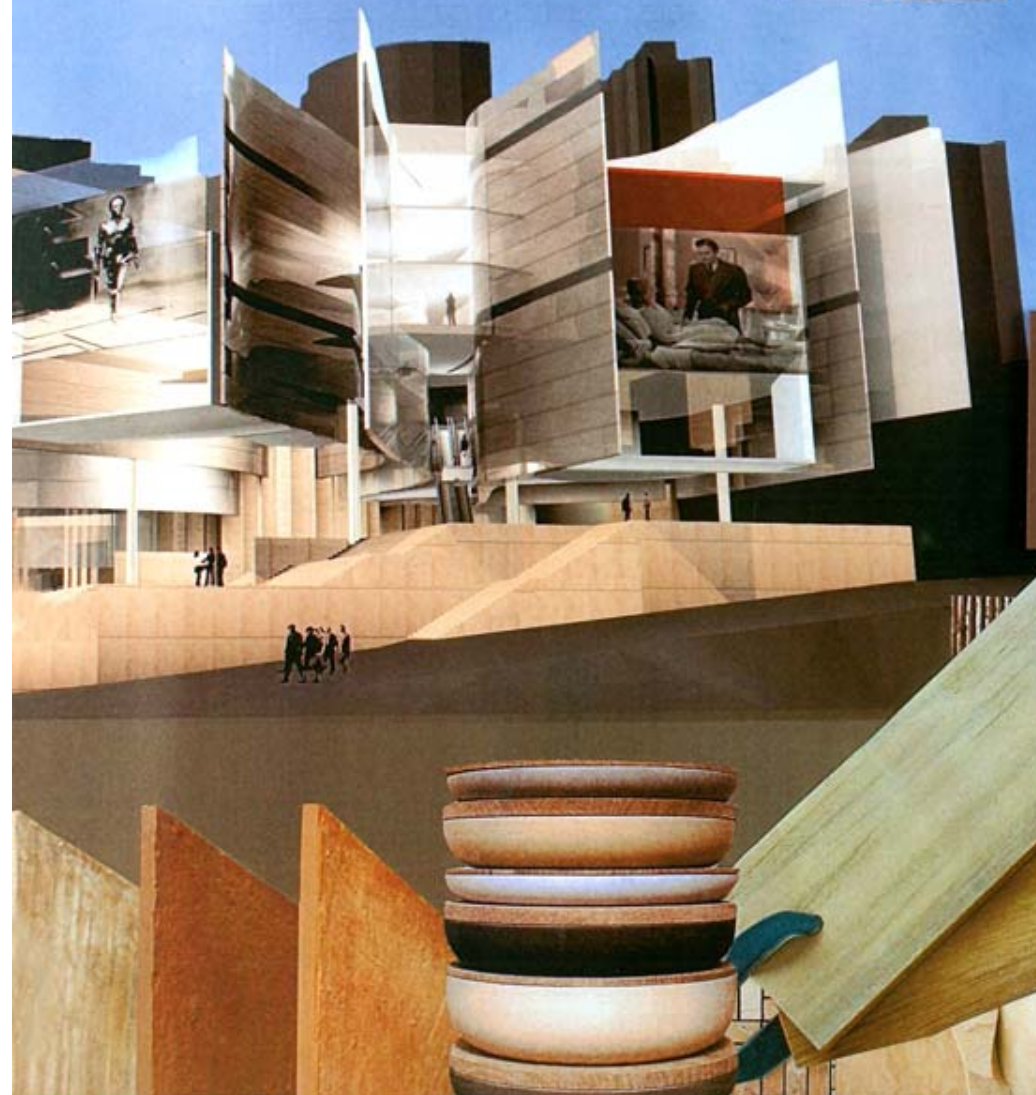


## BIO MORPHIC

innovation edition #2

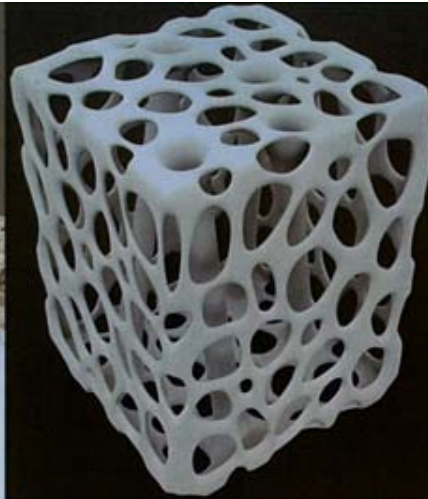
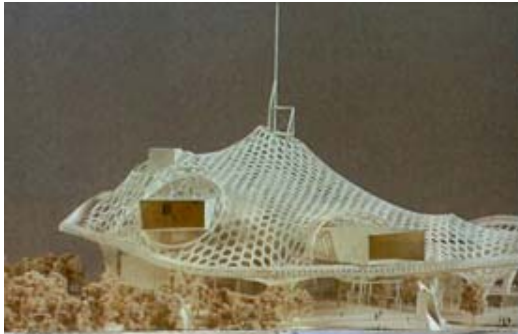


# NATURAL 4.1



25. Beige	
26. Cement	
27. Parchment	
28. Pale Yellow	
29. Off-White	
30. Rose Wood	
31. Terra	
32. Bronze Brown	





AIRY | 3.8







PLAYFUL | 3.7



# TRANSPARENCY | 4.3





HIGH TECH | 4.10





## GLITTER & GLAMOUR

innovation edition #2



# GLITTER & GLAMOUR | 5.1



40 Jet Black





Eau Essentielle  
de Iunx.  
*Cent % naturelle  
Zero % alcool.  
Eau rafraîchissante  
visage et corps.*  
Iunx Essential  
Water.  
*Hundred % natural  
Zero % alcohol.  
Refreshing face  
and body spray.*  
Agua Esencial  
de Iunx.  
*Ciento % natural  
Cero % alcohol.*

SPARKLE

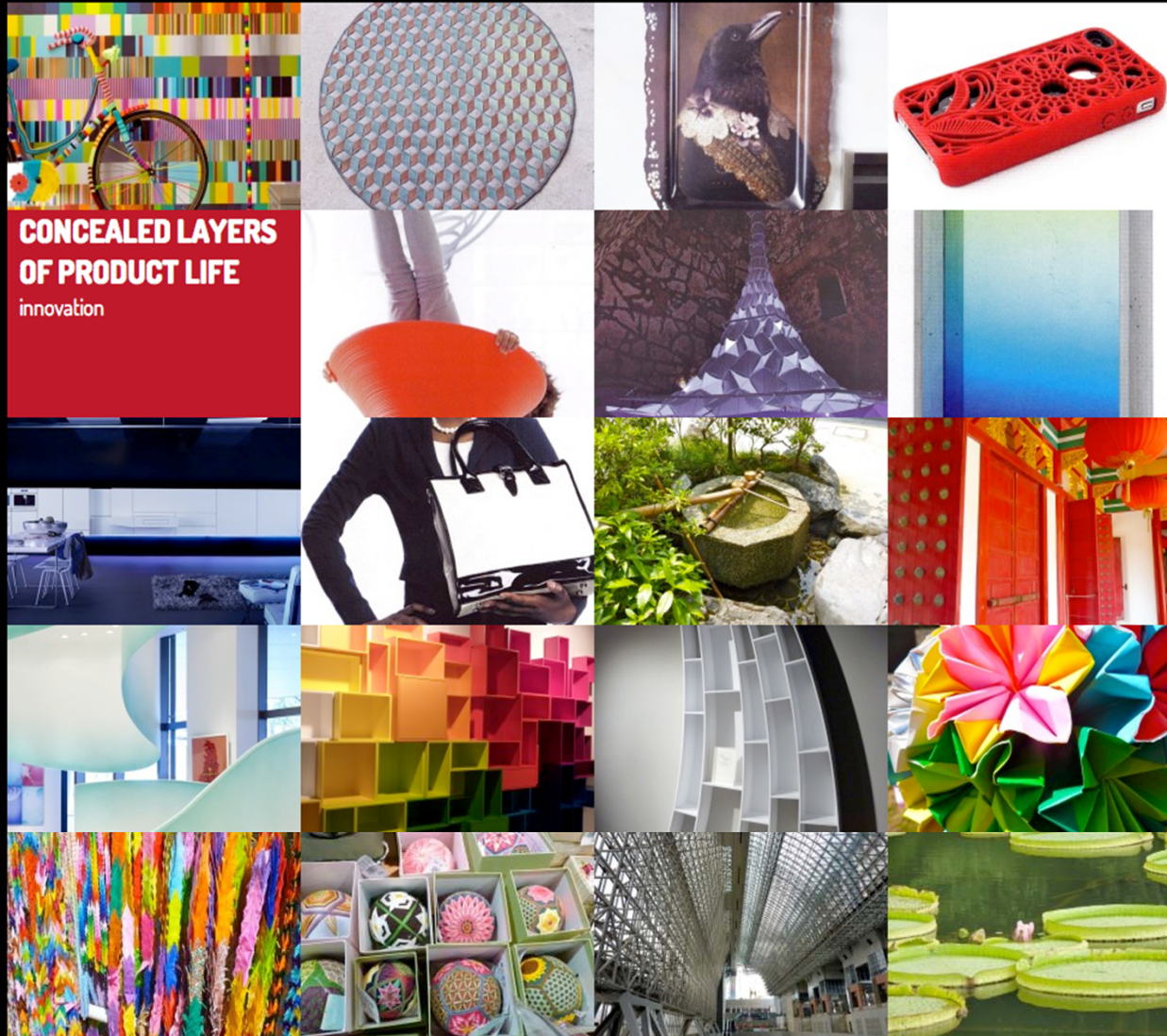
5.3



COPPER & BRONZE 5.7







**CONCEALED LAYERS  
OF PRODUCT LIFE**  
innovation





---

MILOU KET STYLING & DESIGN